

ELAINE DAVIDSON'S

# CLASSIC CROSS STITCH

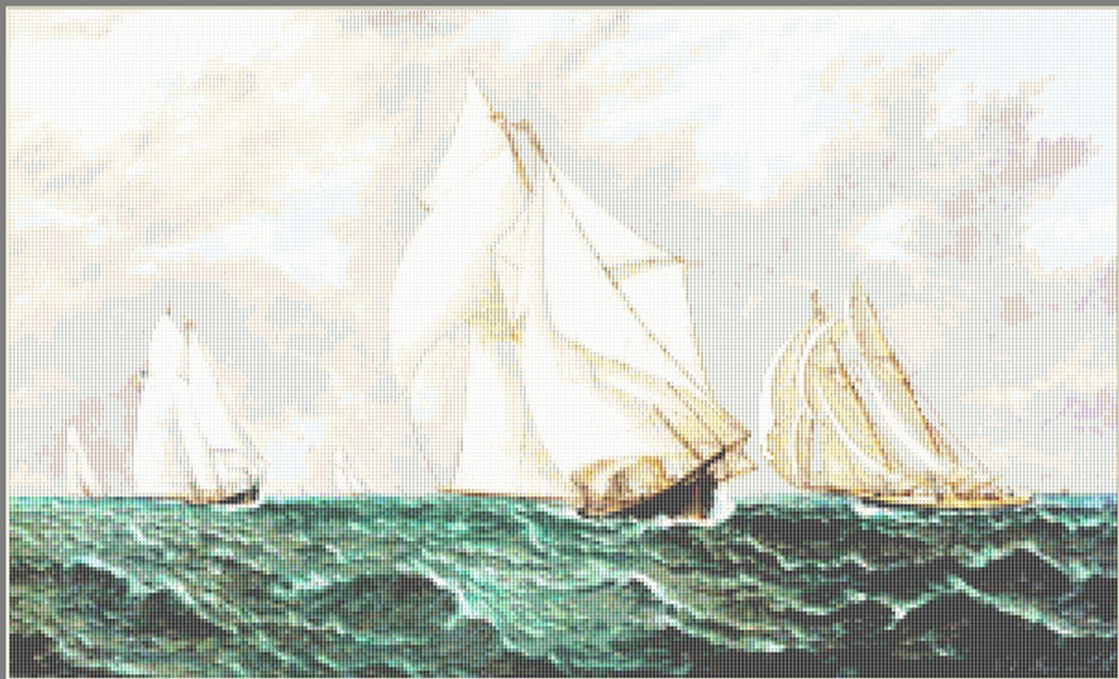
*Yacht Race based on a painting by J E Buttersworth*  
NA 105



**Embroidery Designs in counted cross stitch Chart Only**

- Approximate design size 300 x 181 stitches
- 14 count 21.4 x 12.9 inches
- 16 count 18.75 x 11.3 inches
- 22 count 13.6 x 8.2 inches
- 25 count 12 x 7.2 inches
- 30 count 10 x 6 inches
- Made In Canada

**Date: 20/04/04  
Copyright 2001**



# Thread lengths for Na 105 Yacht Race

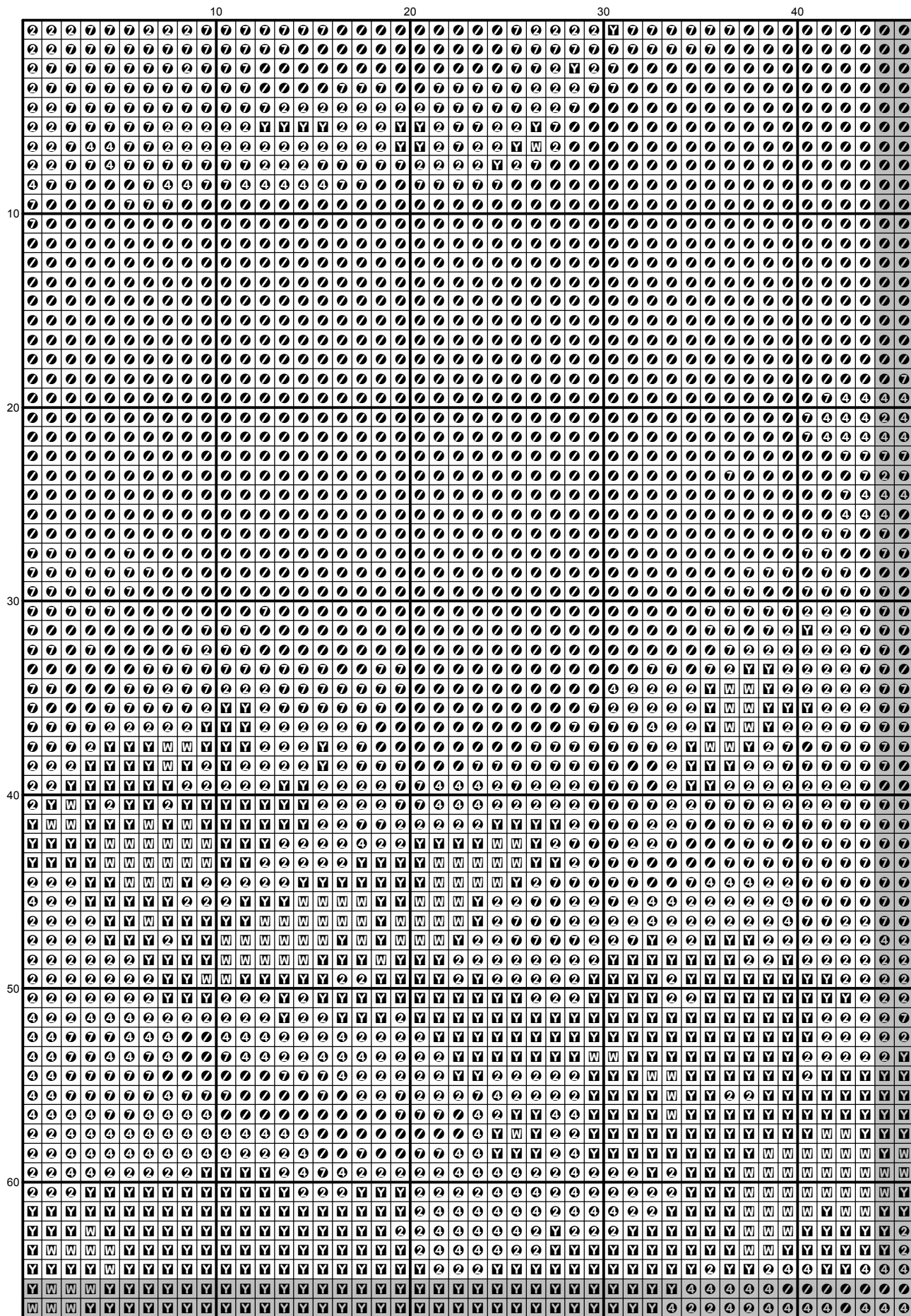
DMC)	Description	skeins
154	Prune rose	1
163	Eucalyptus green	1
165	Pale moss green	1
167	Dark mustard brown	1
169	Pewter grey	1
310	Black	3
317	Steel grey	1
319	Shadow green	1
320	Fern green	1
367	Bay leaf green	1
368	Nile green	1
413	Iron grey	1
414	Lead grey	1
422	Light oak	1
433	Chocolate brown	1
437	Camel	1
453	Turtledove grey	1
500	Ivy green	1
501	Pond green	1
502	Blue green	1
503	Thyme green	1
505	Pine forest green	1
520	Dark fern green	1
522	Trellis green	1
535	Stone grey	1
535	Stone grey	1
543	Shell beige	1
561	Cypress tree green	1
562	Malachite green	1
563	Celadon green	1
564	Light malachite green	1
597	Iceland blue	1
598	Lagoon turquoise	1
610	Dark golden brown	1
612	String brown	1
613	Rope brown	1
640	Green grey	1
642	Earth grey	1
644	Light green grey	1
646	Platinum grey	1
680	Dark old gold	1
712	Cream	2
747	Sea mist blue	1

775	Summer rain blue	1
801	Mink brown	1
822	Cotton cream	1
823	Blueberry blue	1
829	Dark green bronze	1
831	Green bronze	1
833	Brass	1
834	Light brass	1
841	Deer brown	1
842	Beige rope	1
844	Pepper black	1
869	Coffee brown	1
890	Deep forest green	1
898	Teak brown	1
924	Dark pearl green	1
926	Grey green	1
927	Oyster grey	1
928	Light pearl grey	1
930	Slate grey	1
931	Blue grey	1
932	Seagull blue	1
934	Algae green	1
935	Undergrowth green	1
938	Espresso brown	1
950	Beige	1
987	Basil green	1
991	Dark aquamarine green	1
992	Deep water green	1
993	Light green	1
3011	Artichoke green	1
3012	Marsh green	1
3021	Cliff grey	1
3022	Elephant grey	1
3023	Light platinum grey	1
3031	Dark Mocha brown	1
3045	Coffee cream	1
3046	Rye beige	1
3047	Silver birch beige	1
3072	Pale pearl grey	8
3362	Fig tree green	1
3363	Herb green	1
3371	Ebony	1
3743	Pale lilac	1
3756	Cloud blue	4
3768	Storm grey	1
3781	Metal brown	1

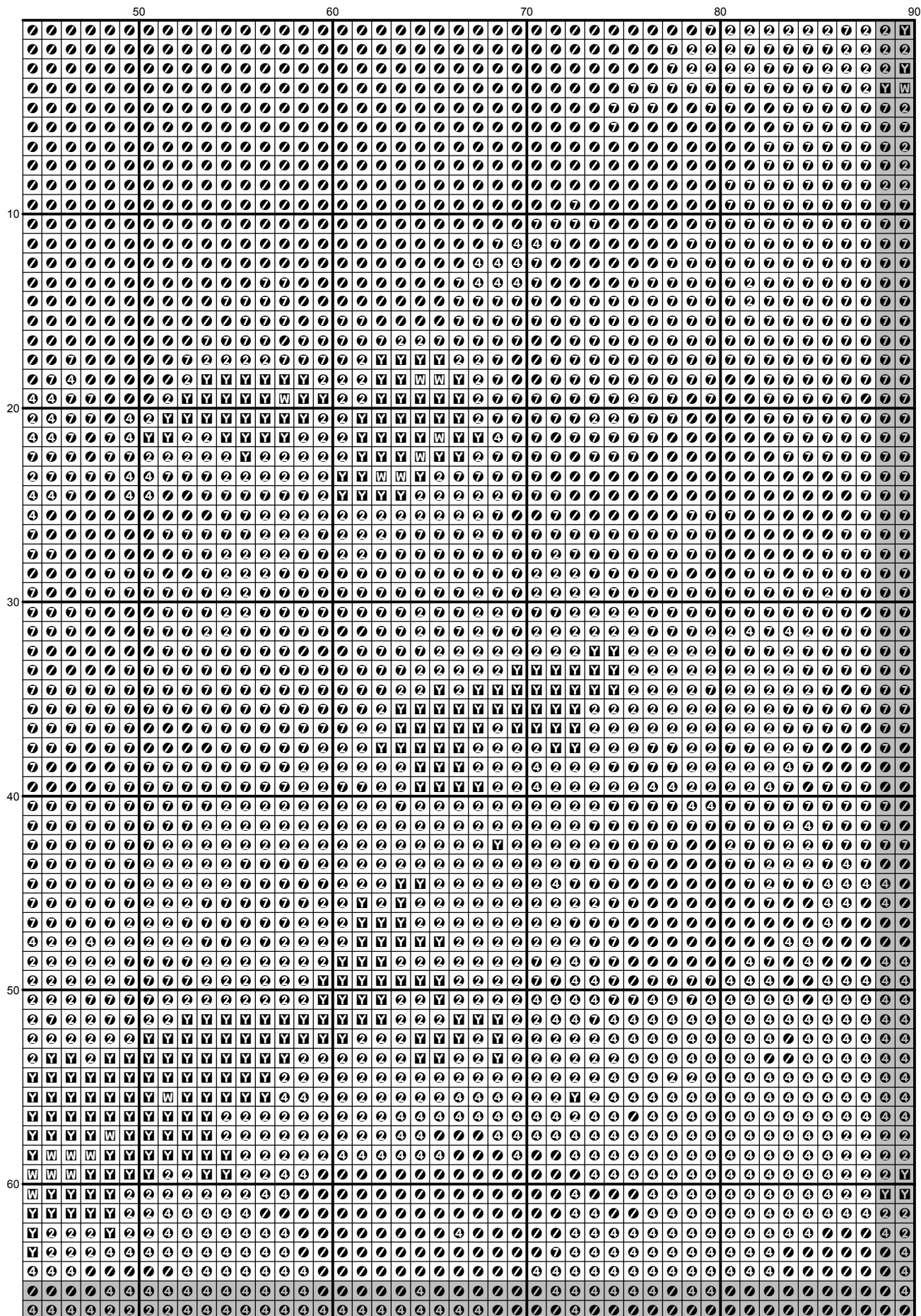
3782	Gingerbread brown	1
3799	Anthracite grey	1
3811	Waterfall blue	1
3813	Light green	1
3815	Eucalyptus Green	1
3816	Snake green	1
3849	Green turquoise	1
3860	Taupe mauve	1
3862	Mocha brown	1
3863	Otter brown	1
3865	Winter white	6
3866	Garlic cream	5
ECRUT	ECRUT	3

Pattern Pages are in the following order plus the symbol key

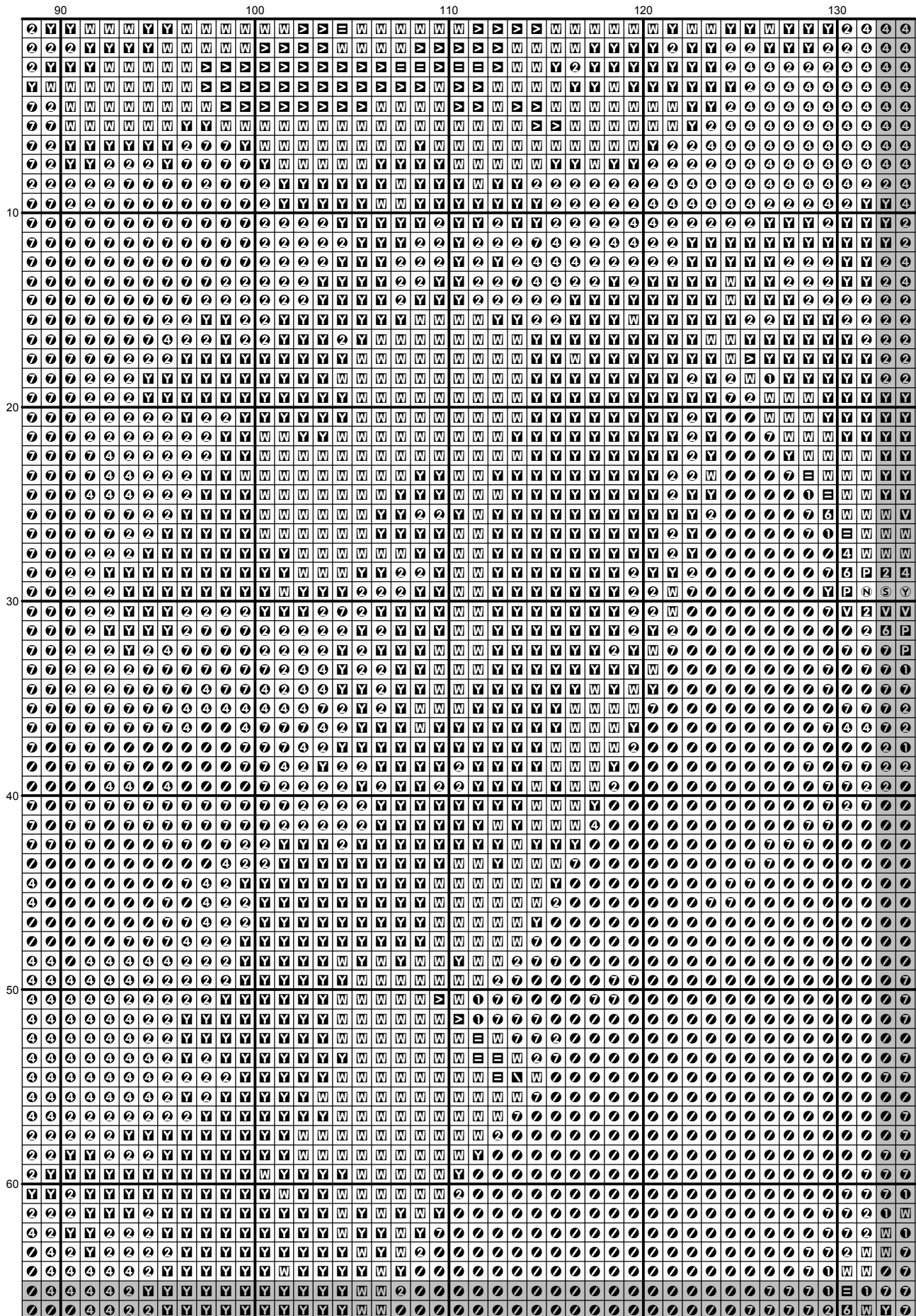
1	2	3	4	5	6	7
8	9	10	11	12	13	14
15	16	17	18	19	20	21

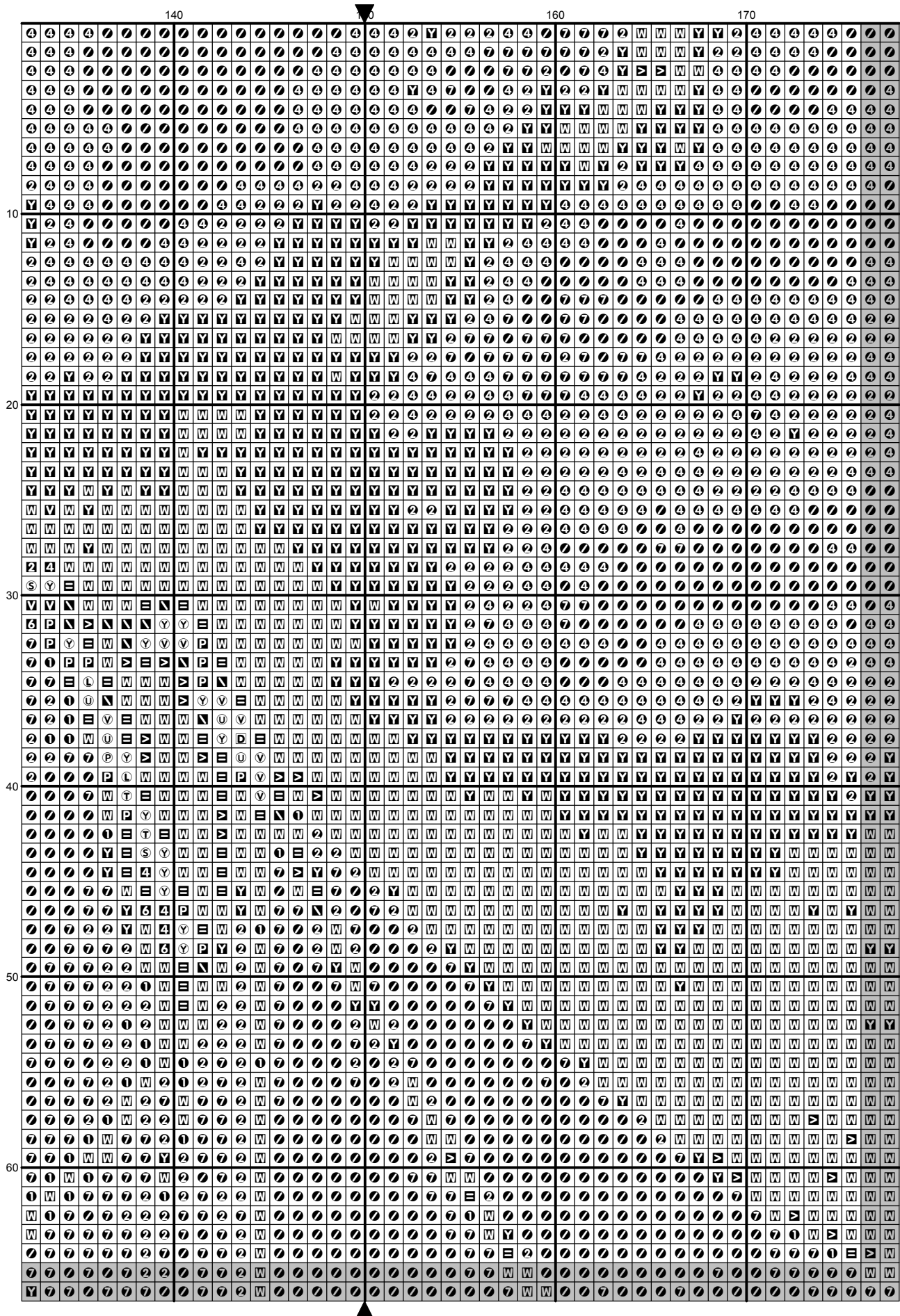


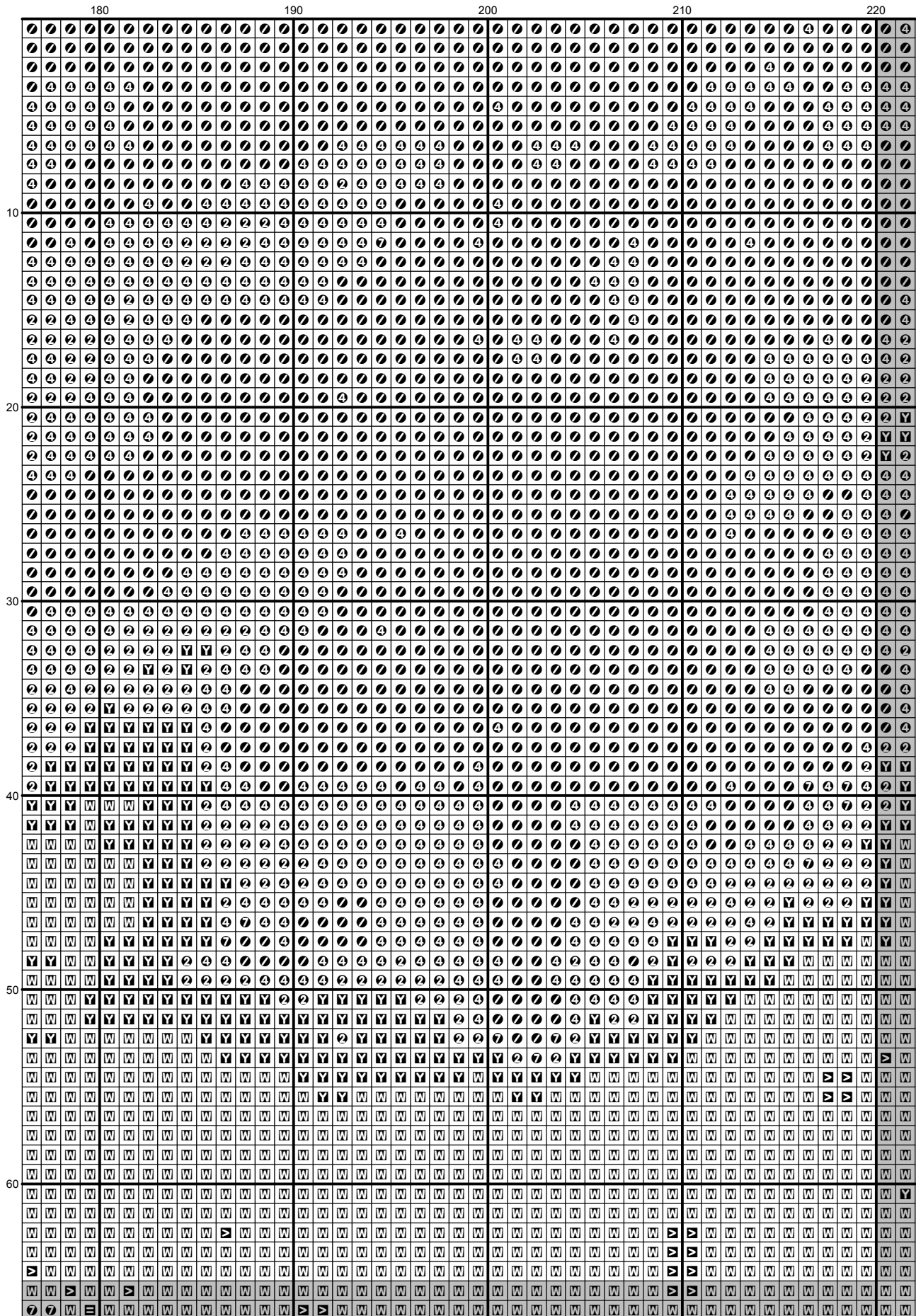


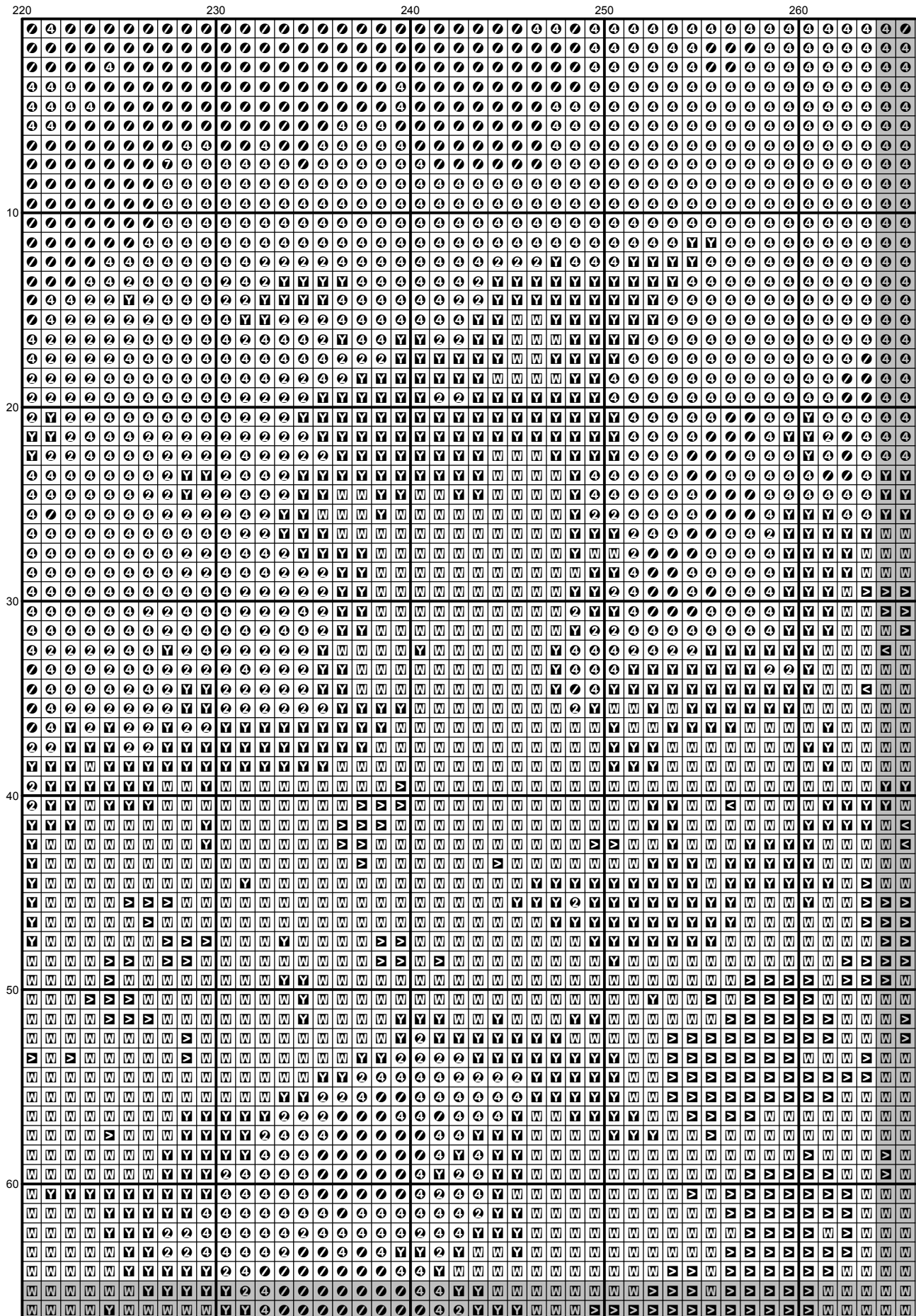


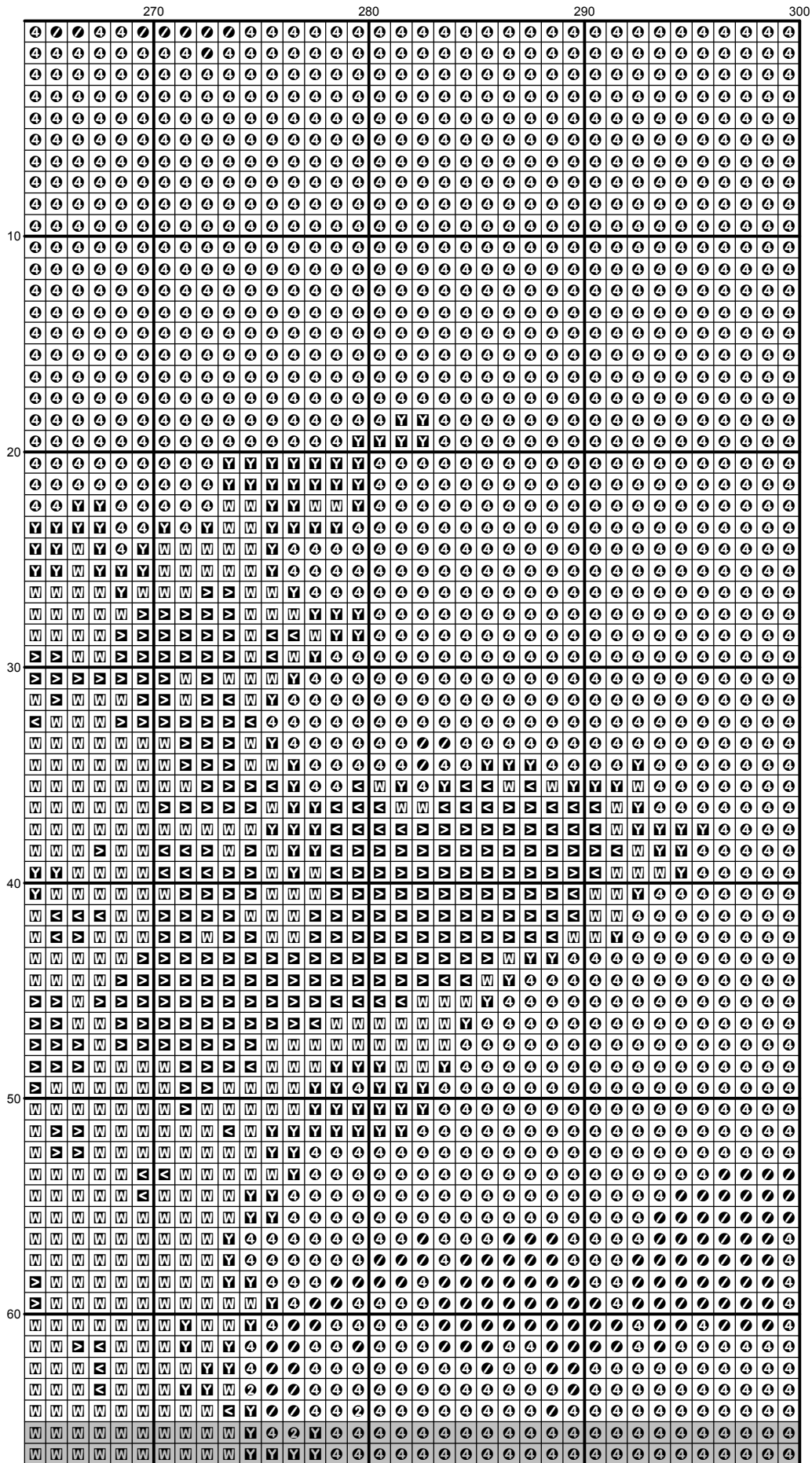


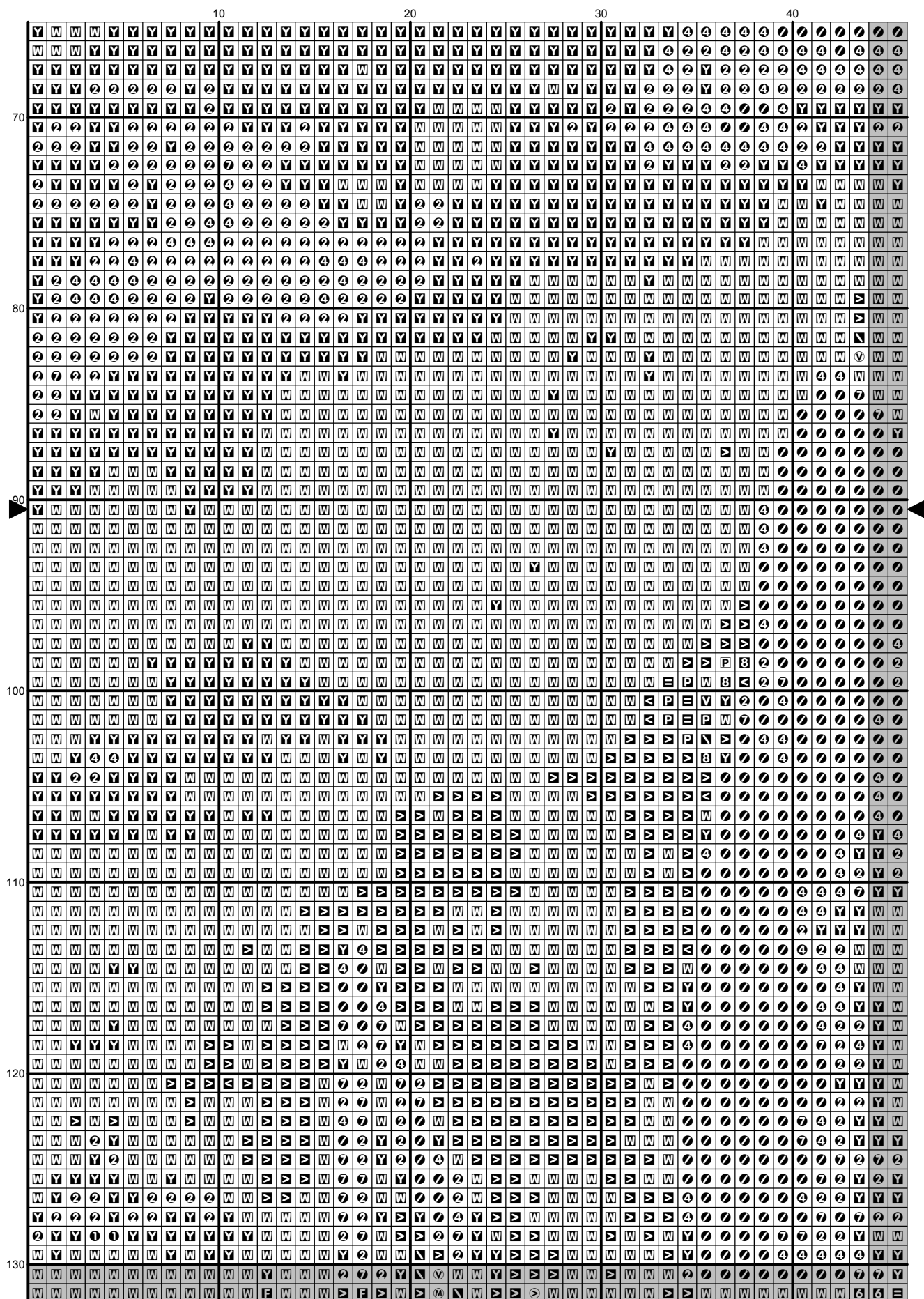


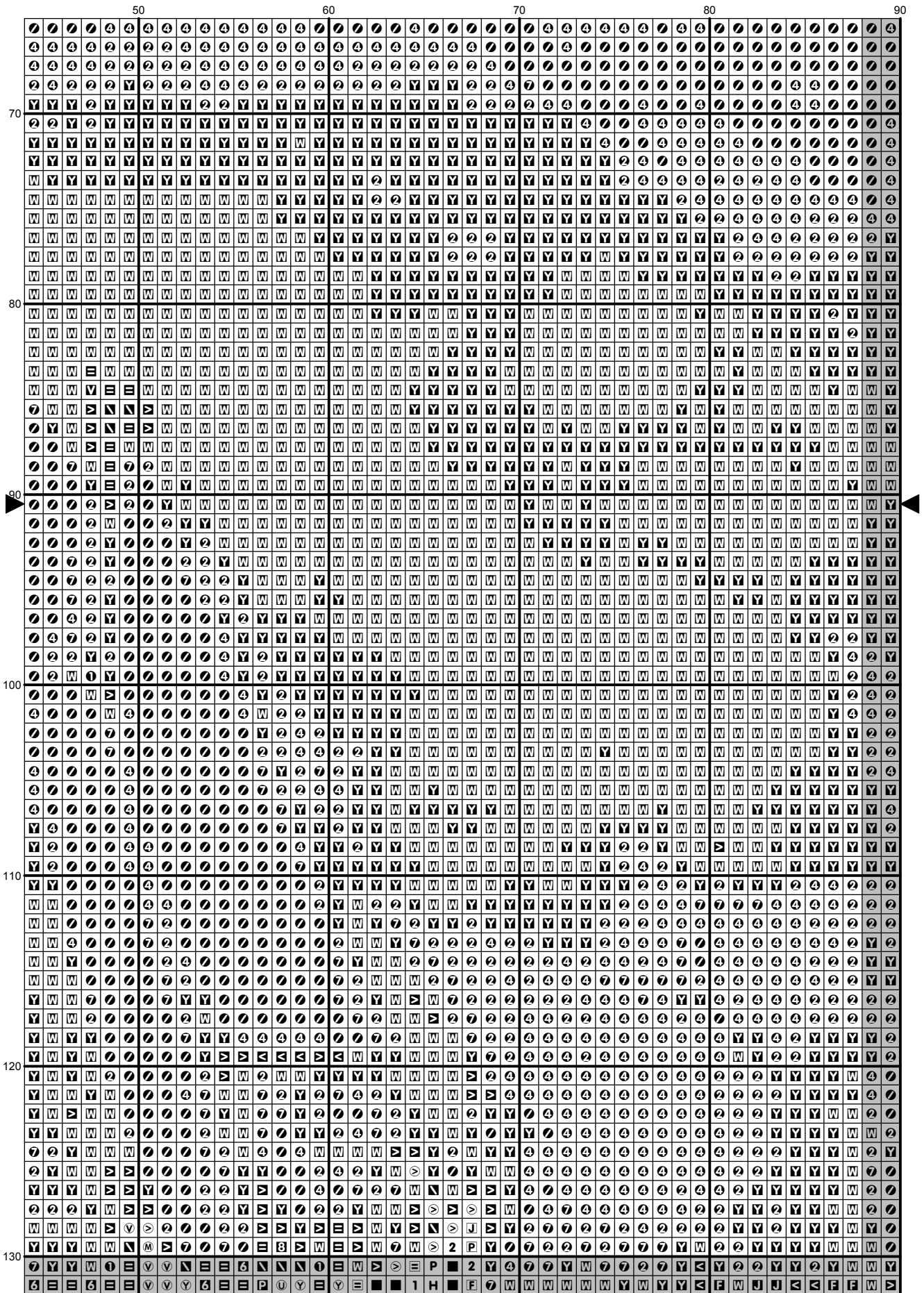




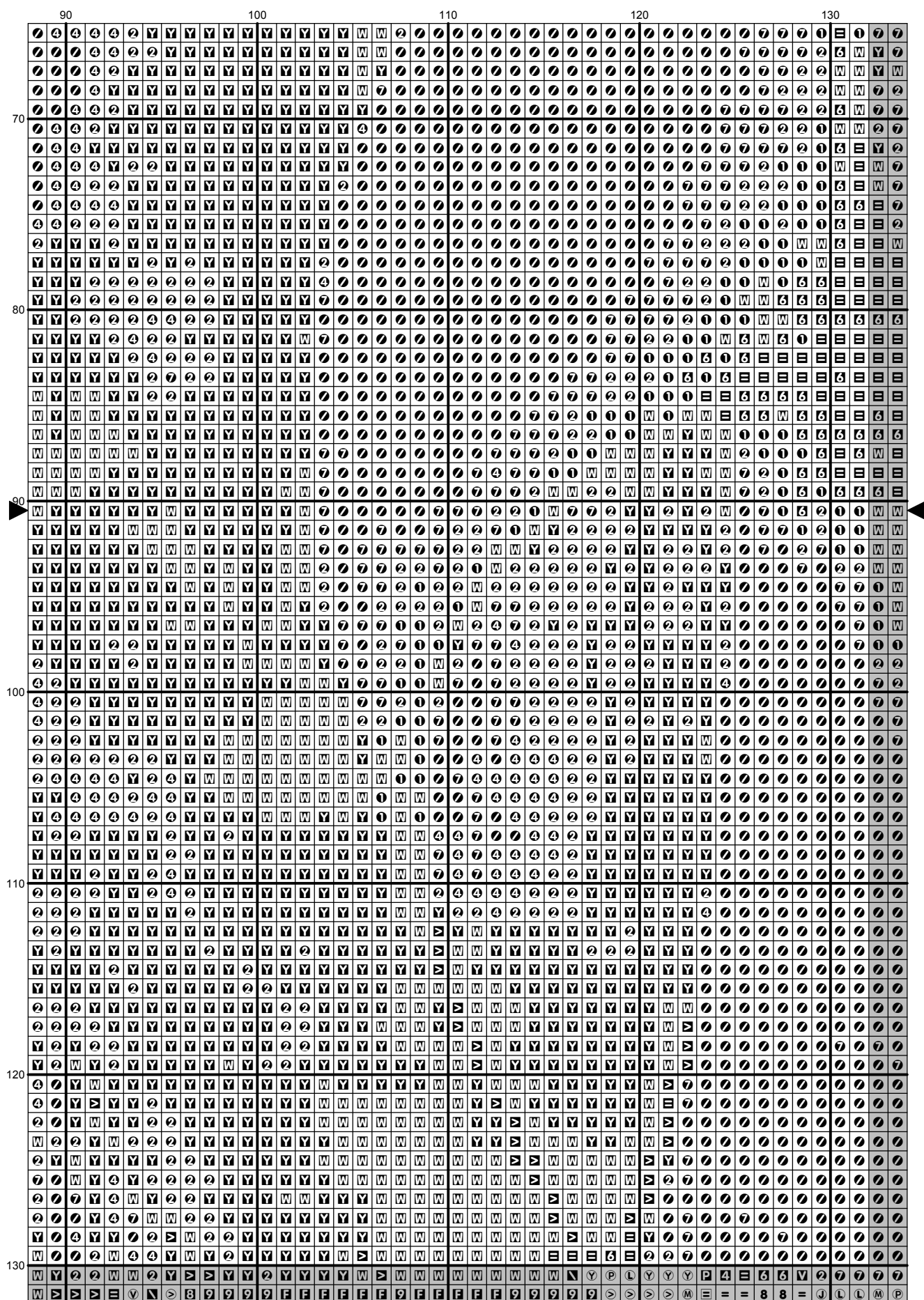


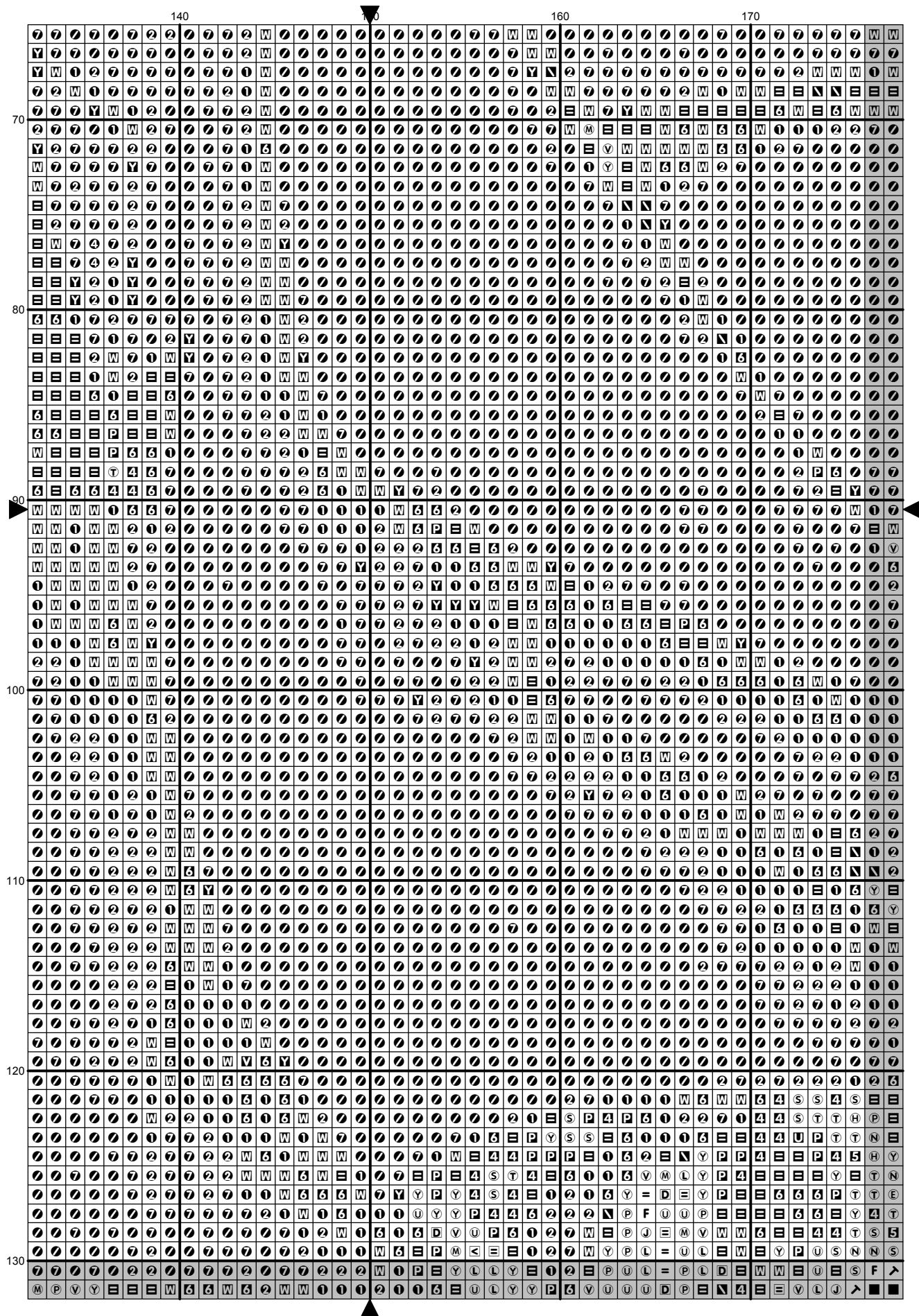


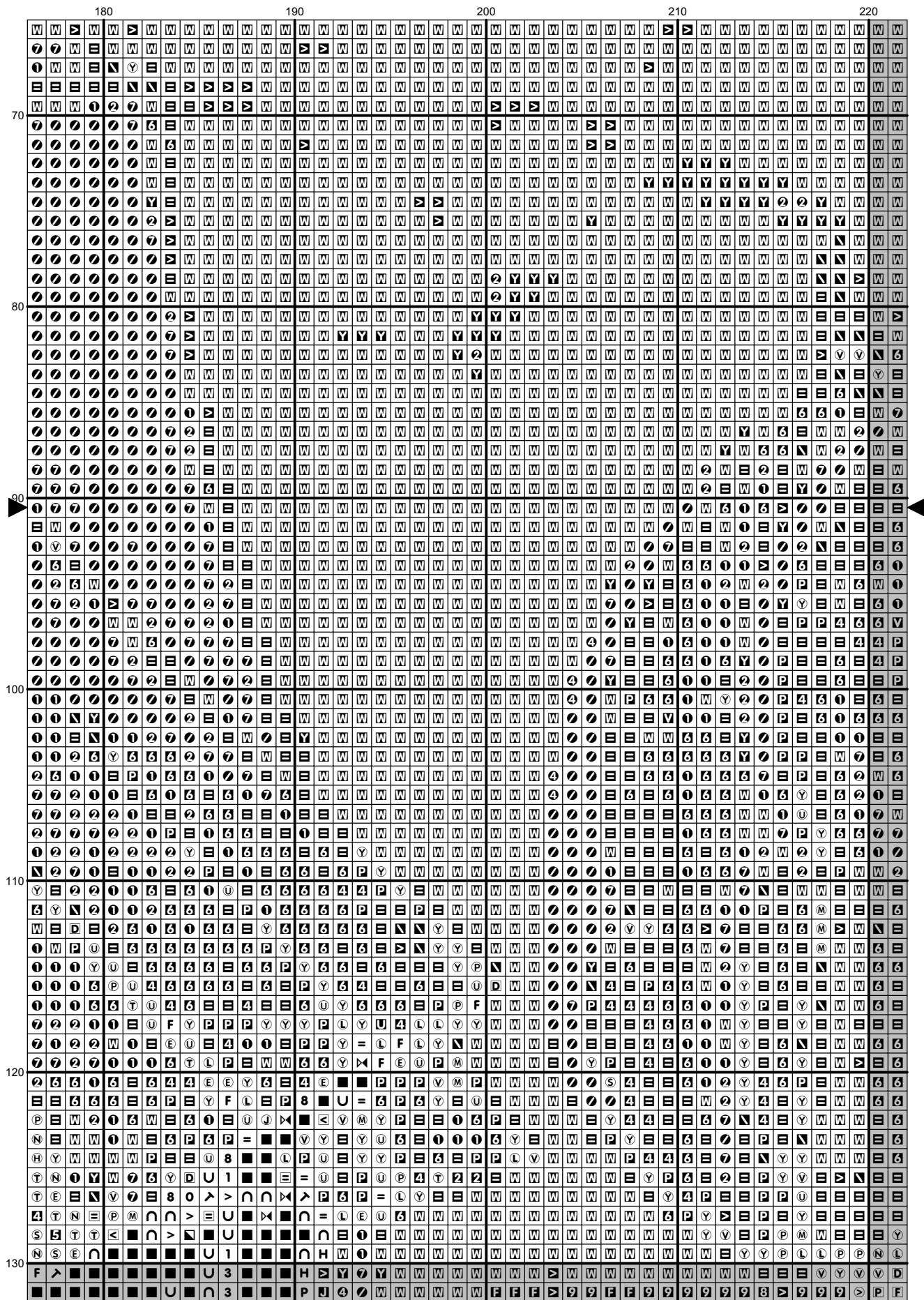


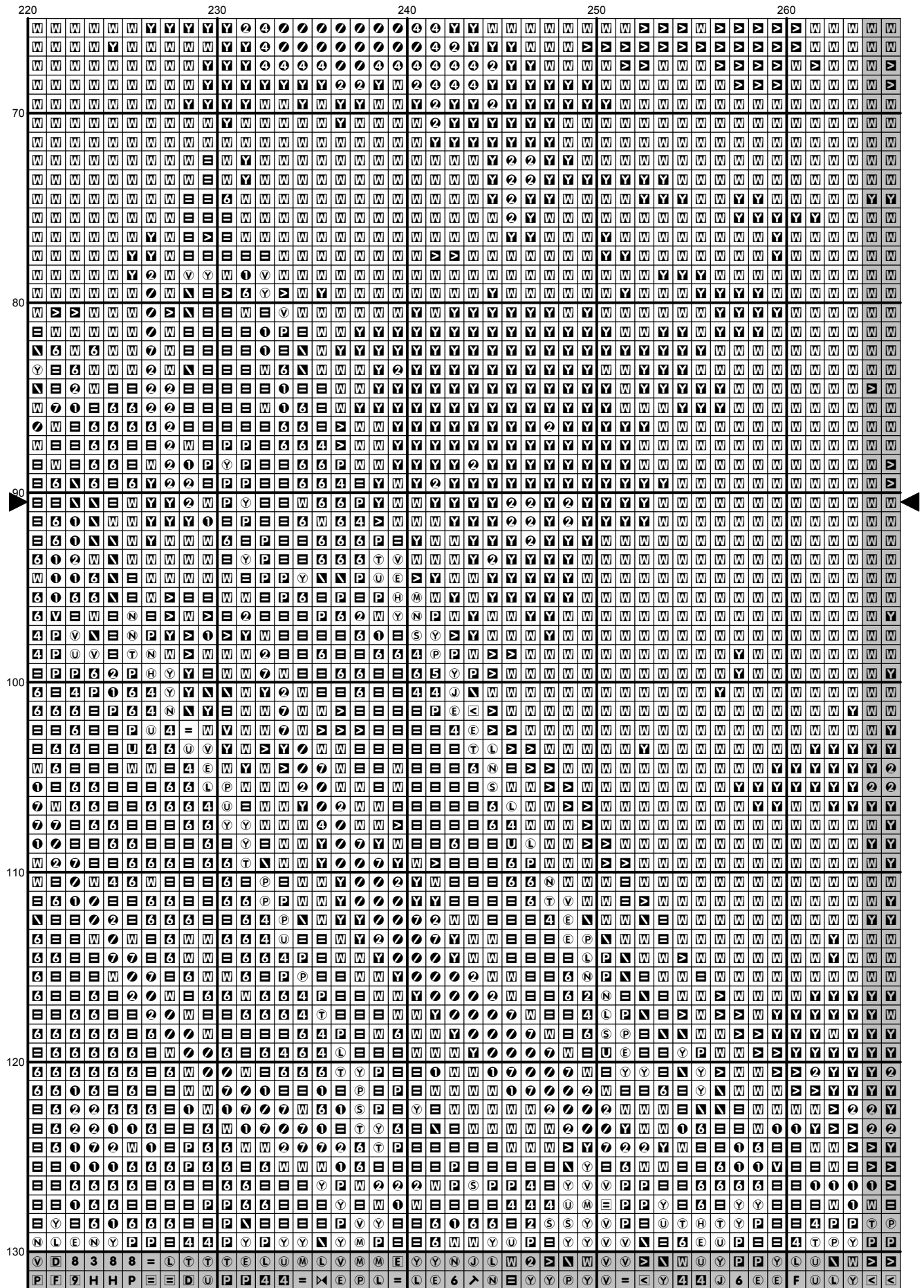


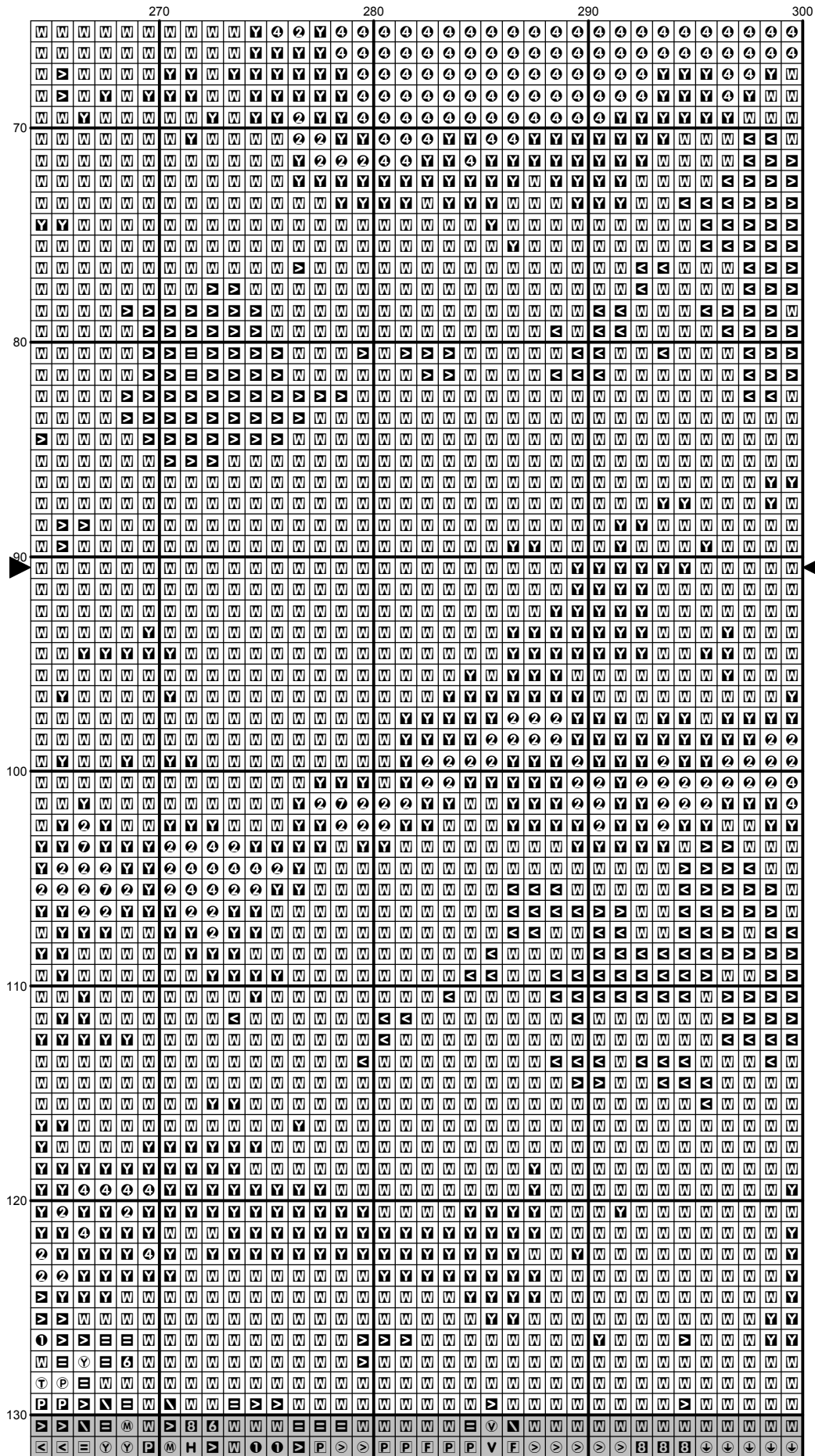




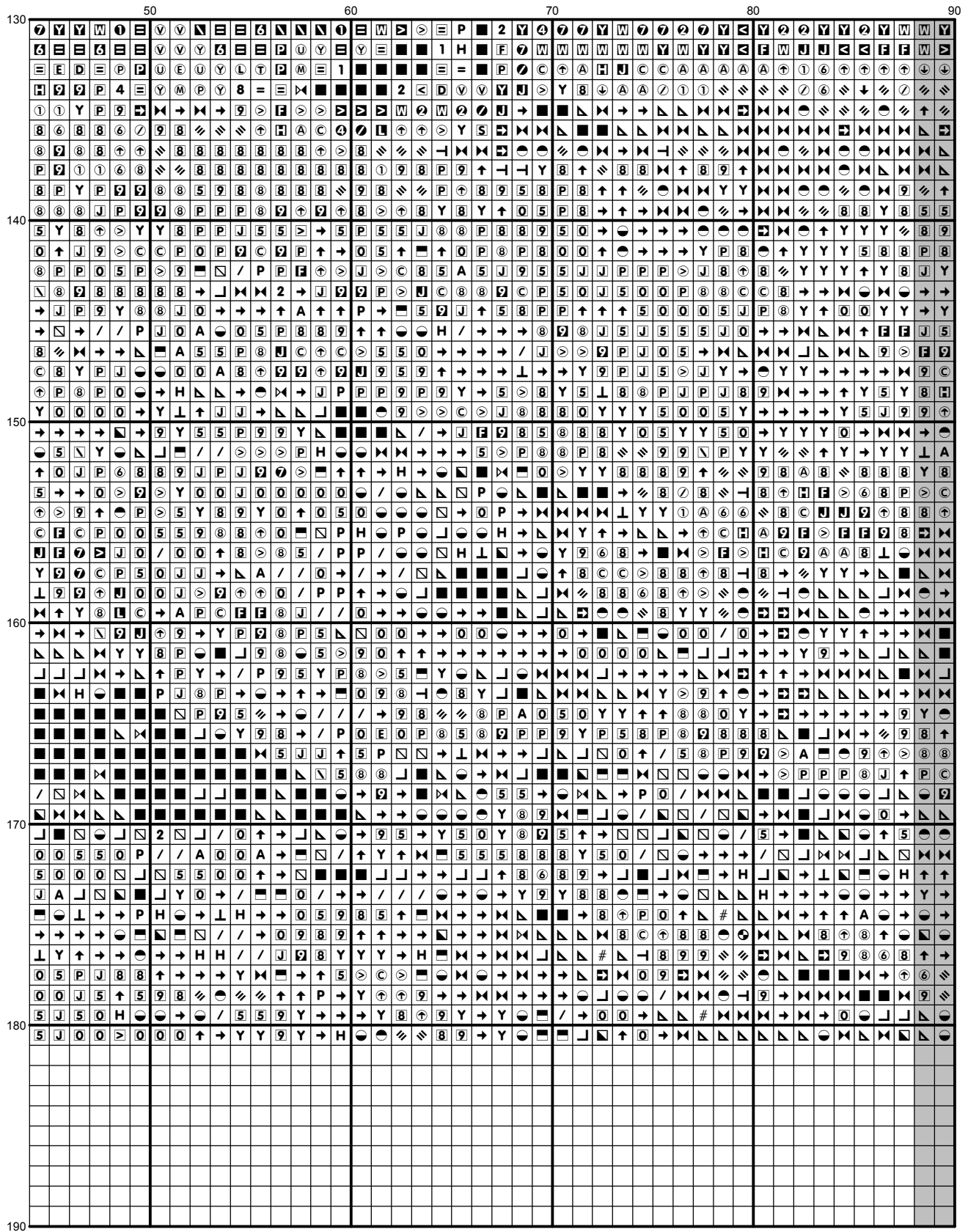




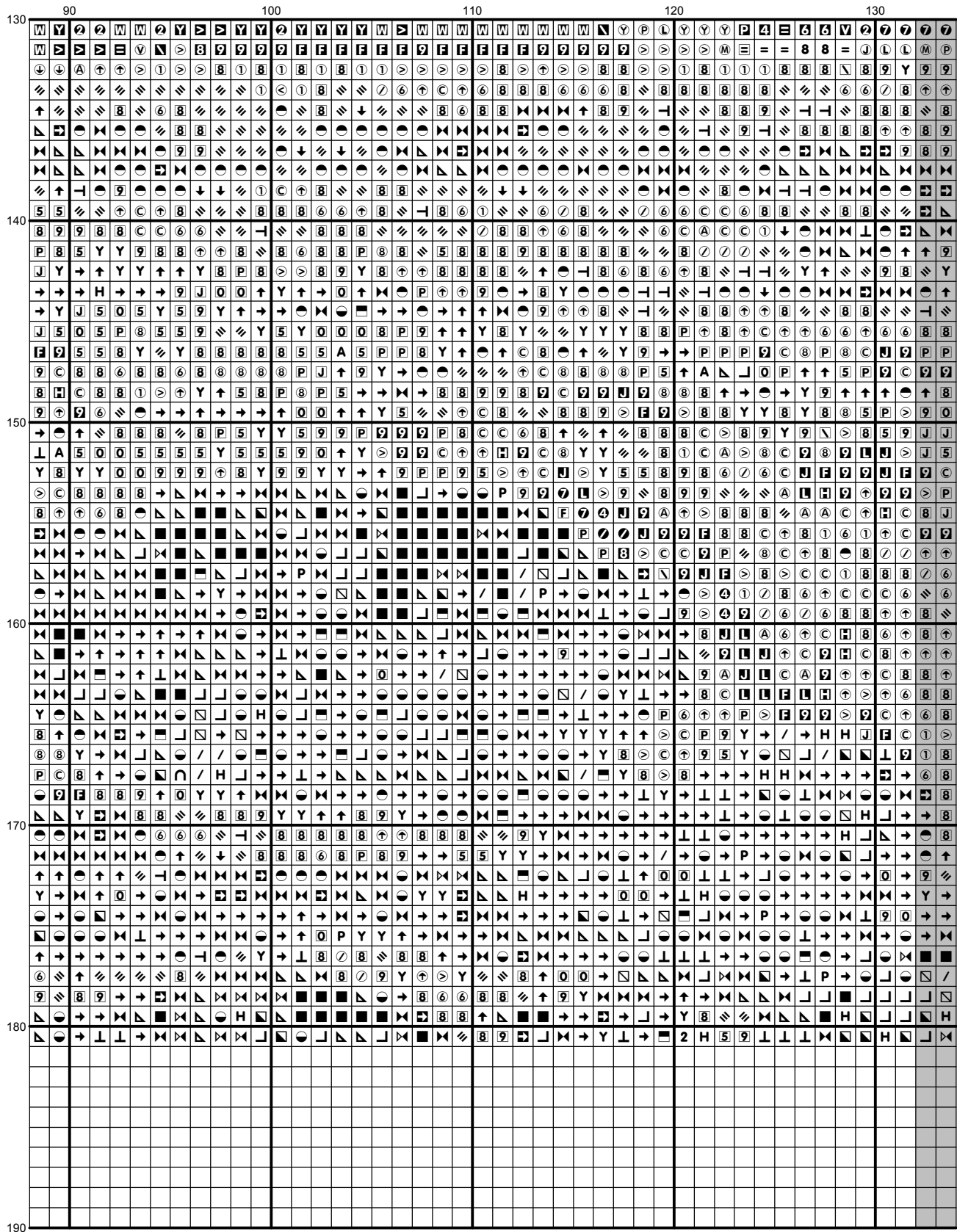


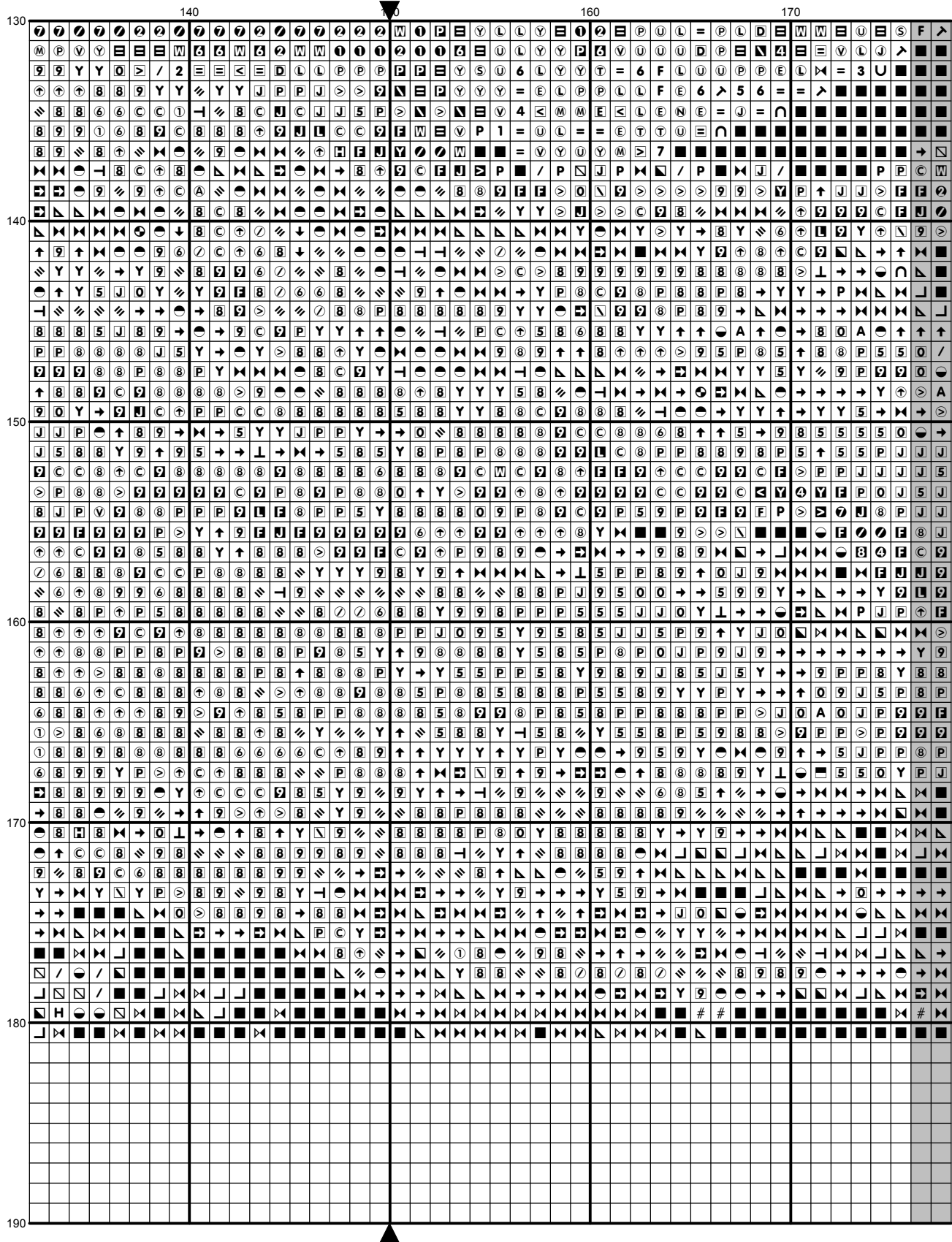


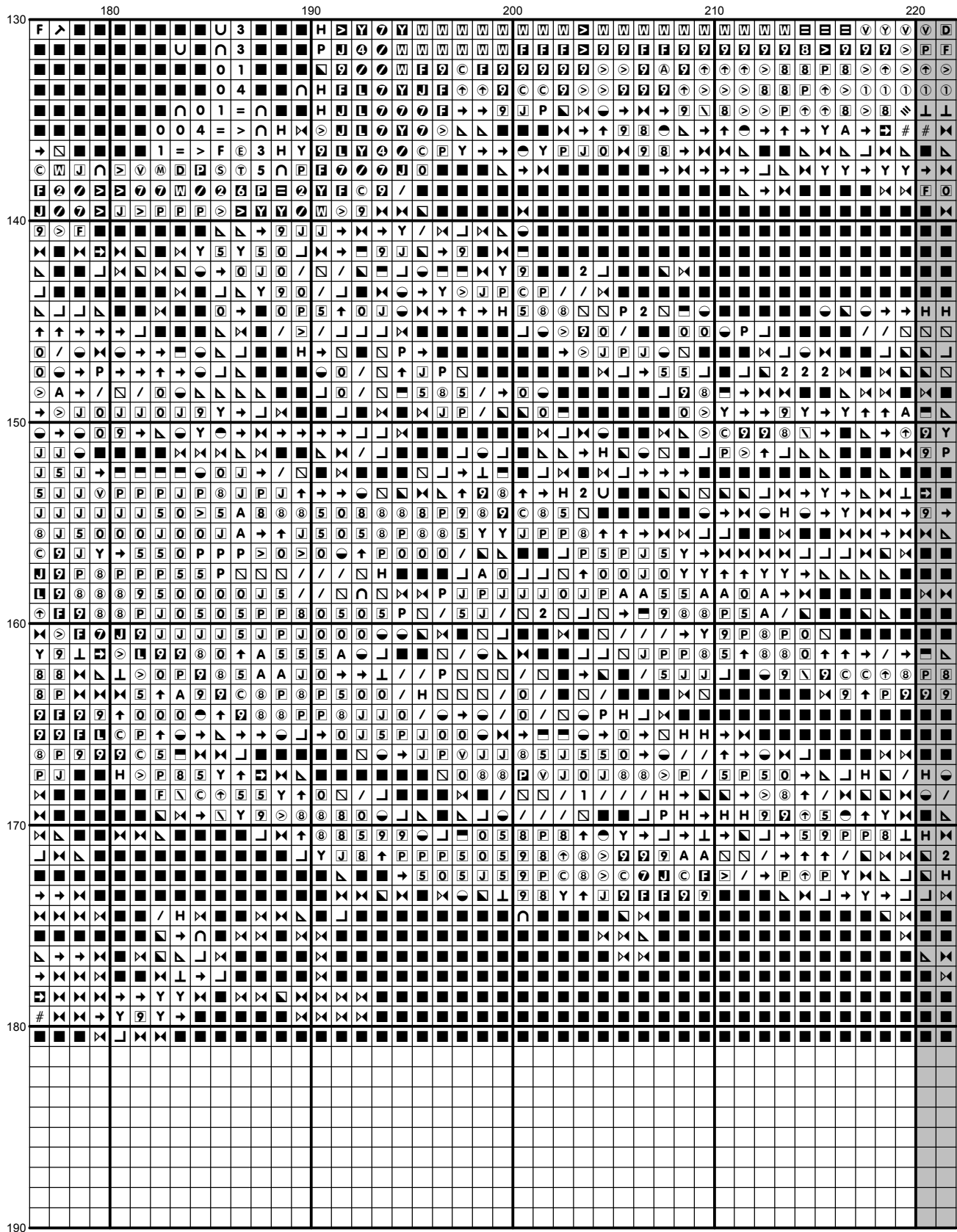
[illegible]

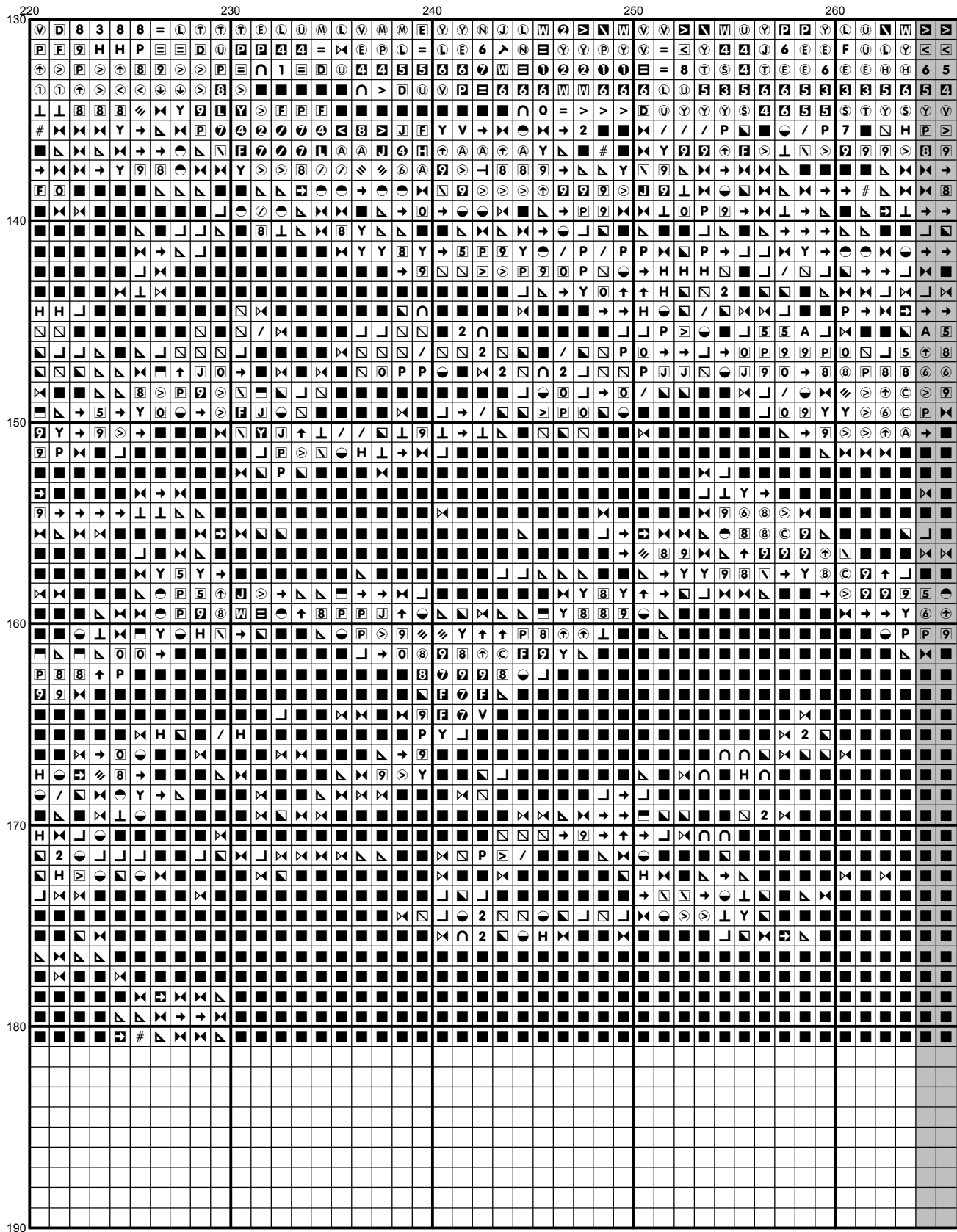


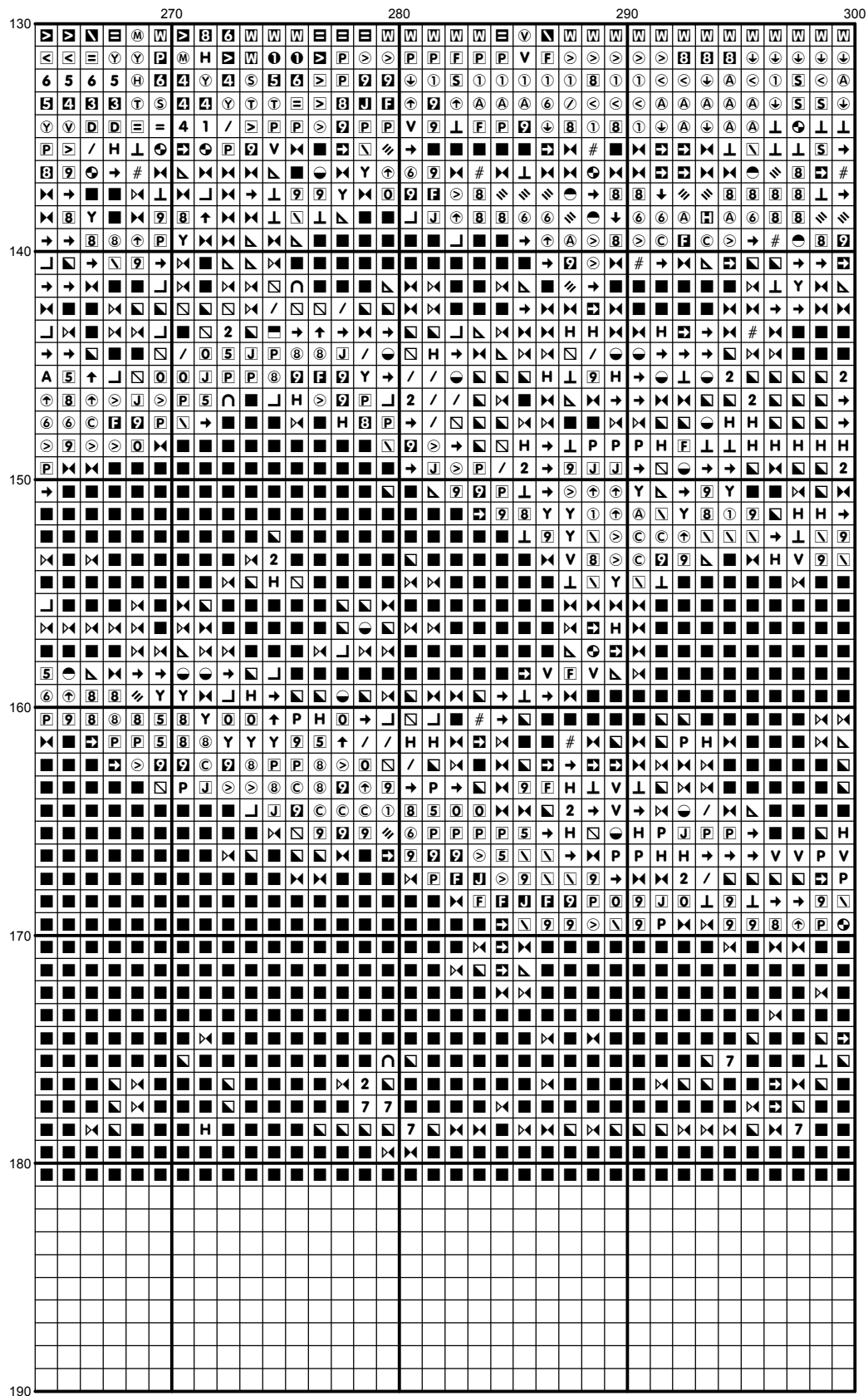












## Instructions and Symbol Key for Design "Na 105 Yacht Race"

**Fabric:** 14 count white Aida

**Stitches:** 300 x 181      **Size:** 21.43 x 12.93 inches or 54.43 x 32.84 cm

**Colours:** DMC

Use **2** strands of thread for cross stitch

Sym	No.	Colour Name	Sym	No.	Colour Name
U	154	Prune rose	Y	163	Eucalyptus green
E	165	Pale moss green	Ⓔ	167	Dark mustard brown
P	169	Pewter grey	■	310	Black
V	317	Steel grey	■	319	Shadow green
S	320	Fern green	↑	367	Bay leaf green
Ⓑ	368	Nile green	7	413	Iron grey
F	414	Lead grey	Ⓢ	422	Light oak
5	433	Chocolate brown	2	437	Camel
☒	453	Turtledove grey	⌘	500	Ivy green
→	501	Pond green	9	502	Blue green
⤵	503	Thyme green	└	505	Pine forest green
◐	520	Dark fern green	J	522	Trellis green
H	535	Stone grey	P	535	Stone grey
M	543	Shell beige	●	561	Cypress tree green
⚡	562	Malachite green	⤵	563	Celadon green
Ⓒ	564	Light malachite green	⤵	597	Iceland blue
Ⓐ	598	Lagoon turquoise	=	610	Dark golden brown
Ⓢ	612	String brown	Y	613	Rope brown
Ⓔ	640	Green grey	Ⓜ	642	Earth grey
Ⓔ	644	Light green grey	Ⓜ	646	Platinum grey
Ⓔ	680	Dark old gold	7	712	Cream
L	747	Sea mist blue	J	775	Summer rain blue
3	801	Mink brown	Ⓢ	822	Cotton cream
#	823	Blueberry blue	8	829	Dark green bronze
F	831	Green bronze	Ⓢ	833	Brass
E	834	Light brass	Ⓢ	841	Deer brown
P	842	Beige rope	2	844	Pepper black
6	869	Coffee brown	△	890	Deep forest green
↗	898	Teak brown	☒	924	Dark pearl green
N	926	Grey green	8	927	Oyster grey
F	928	Light pearl grey	☒	930	Slate grey
S	931	Blue grey	⬇	932	Seagull blue
L	934	Algae green	☒	935	Undergrowth green
⌒	938	Espresso brown	U	950	Beige
A	987	Basil green	↓	991	Dark aquamarine green
⦶	992	Deep water green	Ⓢ	993	Light green
>	3011	Artichoke green	D	3012	Marsh green
1	3021	Cliff grey	E	3022	Elephant grey
Ⓢ	3023	Light platinum grey	0	3031	Dark Mocha brown
Ⓢ	3045	Coffee cream	4	3046	Rye beige
6	3047	Silver birch beige	W	3072	Pale pearl grey
/	3362	Fig tree green	Ⓢ	3363	Herb green
⌘	3371	Ebony	☒	3743	Pale lilac
Ⓢ	3756	Cloud blue	└	3768	Storm grey
4	3781	Metal brown	N	3782	Gingerbread brown
☒	3799	Anthracite grey	☒	3811	Waterfall blue
9	3813	Light green	⚡	3815	Eucalyptus Green

	3816	Snake green		3849	Green turquoise
	3860	Taupe mauve		3862	Mocha brown
	3863	Otter brown		3865	Winter white
	3866	Garlic cream		ECRUT	ECRUT

This chart has been designed and printed with our best intentions of being without mistakes. However, the possibility of human error, printing mistakes or the variation of individual stitching does exist, and we regret that we cannot be responsible for this.

Note: The shaded blocks on the chart represent overlapping stitches.  
 Copyright © Classic cross Stitch 2008 All rights reserved.